

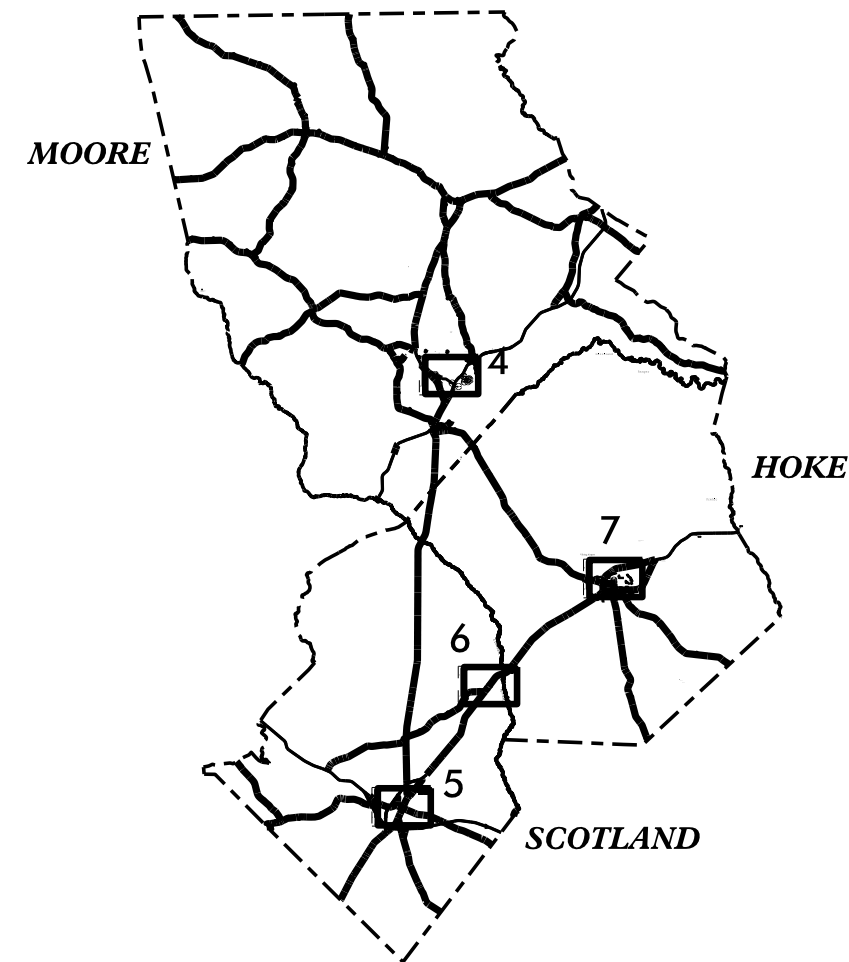
STATE	STATE PROJECT REFERENCE NO.	SHEET NO.	TOTAL SHEETS
N.C.	R-5788HL & R-5788HM	1	
STATE PROJ. NO.	F.A. PROJ. NO.	DESCRIPTION	
44918.3.28	TAP-0801(047)	CONST.	
44918.3.29	TAP-0801(048)	CONST.	

STATE OF NORTH CAROLINA  
DIVISION OF HIGHWAYS

**HOKE, MOORE, & SCOTLAND COUNTIES**

LOCATION: LAURINBURG, RAEFORD,  
SOUTHERN PINES, & WAGRAM

TYPE OF WORK: INSTALL CONCRETE CURB RAMPS, CURB & GUTTER, AND SIDEWALK



DOCUMENT NOT CONSIDERED FINAL  
UNLESS ALL SIGNATURES COMPLETED

**CONTRACT: TIP PROJECTS: R-5788HL AND R-5788HM**

GRAPHIC SCALES  
NTS



PROJECT LENGTH  
VARIOUS INTERSECTIONS

Prepared in the Office of:  
**DIVISION OF HIGHWAYS**  
DIVISION 8 - DDC UNIT

2018 STANDARD SPECIFICATIONS

RIGHT OF WAY DATE:  
NA

LETTING DATE:  
November 28, 2023

HYDRAULICS ENGINEER

SIGNATURE: \_\_\_\_\_ P.E.

DIVISION DESIGN ENGINEER

SIGNATURE: \_\_\_\_\_ P.E.

DIVISION DESIGN ENGINEER

26-OCT-2023 09:23  
C:\user\mericke\Hoke\_Moore\_Scotland\_Ramps\R-5788HL\_HM...tsh.dgn  
mericke AT DIV08-330084L

INDEX OF SHEETS

<u>SHEET NUMBER</u>	<u>SHEET</u>
1 .....	TITLE SHEET
1-A .....	INDEX OF SHEETS
3 THRU 3A .....	SUMMARY OF QUANTITIES
4 THRU 7 .....	VICINITY MAPS
11 THRU 50 .....	PLAN SHEETS

2018 ROADWAY ENGLISH STANDARD DRAWINGS

The following Roadway Standards as appear in "Roadway Standard Drawings" Highway Design Branch – N. C. Department of Transportation – Raleigh, N. C., Dated January 2018 are applicable to this project and by reference hereby are considered a part of these plans:

<u>STD.NO.</u>	<u>TITLE</u>
846.01	CONCRETE CURB, GUTTER, AND CURB & GUTTER
848.01	CONCRETE SIDEWALK
848.05, 848.06	CURB RAMPS

NOTES

ALL CURB RAMP TYPES TO BE CONSTRUCTED AS DIRECTED BY THE ENGINEER.

PROJECT NO.	SHEET NO.	TOTAL NO.
44918.1.28 (R-5788HL), 44918.1.29 (R-5788HM)	3	

### SUMMARY OF QUANTITIES

PROJECT NO	COUNTY	MAP NO	ROUTE	DESCRIPTION	TYP NO	LANES	LANE TYPE	FINAL SURFACE TESTING REQUIRED	WARM MIX ASPHALT REQUIRED	LENGTH	WIDTH	BEGIN MP	END MP	2549000000-E	2591000000-E	2600000000-N	2613000000-N	2738000000-E	2845000000-N															
														2'-6" CURB & GUTTER	4" CONCRETE SIDEWALK	RETROFIT EXISTING CURB RAMP	REMOVE AND REPLACE CURB RAMP	GENERIC PAVING ITEM - REMOVE AND REPLACE ASPHALT PAVEMENT	ADJUST METER OR VALVE BOX															
														MI	FT																			
44918.1.28 (R-5788HL)	Moore	1	SR 2116 (NE BROAD ST) AT SR 2033 (E CONNECTICUT AVE)	SOUTHERN PINES		2		NO	NO			0	0					3	3															
<b>TOTAL FOR MAP NO. 1</b>																																		
44918.1.28 (R-5788HL)	Moore	2	SR 2116 (NE BROAD ST) AT E NEW HAMPSHIRE AVE	SOUTHERN PINES		2		NO	NO			0	0					8	1	5														
<b>TOTAL FOR MAP NO. 2</b>																																		
44918.1.28 (R-5788HL)	Moore	3	SR 2035 (NW BROAD ST) AT W NEW HAMPSHIRE AVE	SOUTHERN PINES		2		NO	NO			0	0					8	1	5														
<b>TOTAL FOR MAP NO. 3</b>																																		
44918.1.28 (R-5788HL)	Moore	4	SR 2033 (E CONNECTICUT AVE) AT N ASHE ST	SOUTHERN PINES		2		NO	NO			0	0							1														
<b>TOTAL FOR MAP NO. 4</b>																																		
44918.1.28 (R-5788HL)	Moore	5	SR 1905 (FELTON CAPEL LN) AT DAIRY QUEEN	SOUTHERN PINES		2		NO	NO			0	0							4														
<b>TOTAL FOR MAP NO. 5</b>																																		
44918.1.28 (R-5788HL)	Moore	6	SR 1848 (W PENNSYLVANIA AVE) AT BOLES FUNERAL HOME	SOUTHERN PINES		2		NO	NO			0	0							2														
<b>TOTAL FOR MAP NO. 6</b>																																		
44918.1.28 (R-5788HL)	Moore	7	SR 1848 (W PENNSYLVANIA AVE) AT POLICE DEPARTMENT	SOUTHERN PINES		2		NO	NO			0	0							2														
<b>TOTAL FOR MAP NO. 7</b>																																		
44918.1.28 (R-5788HL)	Moore	8	SR 1848 (E PENNSYLVANIA AVE) AT N ASHE ST	SOUTHERN PINES		2		NO	NO			0	0							9														
<b>TOTAL FOR MAP NO. 8</b>																																		
44918.1.28 (R-5788HL)	Moore	9	SR 1309 (W MORGANTON RD) AT S MECHANIC ST	SOUTHERN PINES		2		NO	NO			0	0							14														
<b>TOTAL FOR MAP NO. 9</b>																																		
44918.1.28 (R-5788HL)	Moore	10	SR 1309 (W MORGANTON RD) AT FELTON CAPEL LN	SOUTHERN PINES		2		NO	NO			0	0							9														
<b>TOTAL FOR MAP NO. 10</b>																																		
44918.1.28 (R-5788HL)	Moore	11	SOUTHERN RD AT VARIOUS DRIVEWAYS	SOUTHERN PINES - NON SYSTEM		2		NO	NO			0	0							14														
<b>TOTAL FOR MAP NO. 11</b>																																		
44918.1.28 (R-5788HL)	Moore	12	S BENNETT ST AT MUNICIPAL PARKING	SOUTHERN PINES - NON SYSTEM		2		NO	NO			0	0							2														
<b>TOTAL FOR MAP NO. 12</b>																																		
44918.1.28 (R-5788HL)	Moore	13	PARTNER CIRCLE AT VARIOUS DRIVEWAYS	SOUTHERN PINES - NON SYSTEM		2		NO	NO			0	0							2														
<b>TOTAL FOR MAP NO. 13</b>																																		
44918.1.28 (R-5788HL)	Moore	14	MASSACHUSETTS AVE AT FIRST BANK	SOUTHERN PINES - NON SYSTEM		2		NO	NO			0	0							36														
<b>TOTAL FOR MAP NO. 14</b>																																		
44918.1.28 (R-5788HL)	Moore	15	BRUCEWOOD RD AT VARIOUS DRIVEWAYS	SOUTHERN PINES - NON SYSTEM		2		NO	NO			0	0							20														
<b>TOTAL FOR MAP NO. 15</b>																																		
44918.1.28 (R-5788HL)	Moore	16	OLD US 1 AT SR 2080 (W MORGANTON RD)	SOUTHERN PINES		2		NO	NO			0	0							36														
<b>TOTAL FOR MAP NO. 16</b>																																		
44918.1.28 (R-5788HL)	Scotland	17	US 401 (N MAIN ST) AT CRONLY ST	LAURINBURG		2		NO	NO			0	0							6														
<b>TOTAL FOR MAP NO. 17</b>																																		
44918.1.28 (R-5788HL)	Scotland	18	US 401 (N MAIN ST) AT MCKAY ST	LAURINBURG		2		NO	NO			0	0							6														
<b>TOTAL FOR MAP NO. 18</b>																																		
44918.1.28 (R-5788HL)	Scotland	19	US 401 (N MAIN ST) AT FAIRLY ST	LAURINBURG		2		NO	NO			0	0							4														
<b>TOTAL FOR MAP NO. 19</b>																																		
44918.1.28 (R-5788HL)	Scotland	20	US 401 (N MAIN ST) AT ROPER ST	LAURINBURG		2		NO	NO			0	0							4														
<b>TOTAL FOR MAP NO. 20</b>																																		
44918.1.28 (R-5788HL)	Scotland	21	US 401 (N MAIN ST) AT RAILROAD ST	LAURINBURG		2		NO	NO			0	0							4														
<b>TOTAL FOR MAP NO. 21</b>																																		
<b>TOTAL FOR PROJ NO. 44918.1.28 (R-5788HL)</b>																																		
44918.1.29 (R-5788HM)	Scotland	22	US 401 AT E FIRST ST	WAGRAM		2		NO	NO			0	0							4														
<b>TOTAL FOR MAP NO. 22</b>																																		
44918.1.29 (R-5788HM)	Scotland	23	US 401 AT BUNDY ST	WAGRAM		2		NO	NO			0	0							4														
<b>TOTAL FOR MAP NO. 23</b>																																		
44918.1.29 (R-5788HM)	Hoke	24	NC 211 (W PROSPECT AVE) AT GREEN ST	RAEFORD		2		NO	NO			0	0							5														
<b>TOTAL FOR MAP NO. 24</b>																																		
44918.1.29 (R-5788HM)	Hoke	25	NC 211 (W PROSPECT AVE) AT N BETHEL RD	RAEFORD		2		NO	NO			0	0							5														
<b>TOTAL FOR MAP NO. 25</b>																																		
44918.1.29 (R-5788HM)	Hoke	26	NC 211 (W PROSPECT AVE) AT N FULTON RD	RAEFORD		2		NO	NO			0	0							5														
<b>TOTAL FOR MAP NO. 26</b>																																		
44918.1.29 (R-5788HM)	Hoke	27	NC 211 (W PROSPECT AVE) AT N MAGNOLIA ST	RAEFORD		2		NO	NO			0	0							2														
<b>TOTAL FOR MAP NO. 27</b>																																		
44918.1.29 (R-5788HM)	Hoke	28	NC 211 (W PROSPECT AVE) AT N MAIN ST	RAEFORD		2		NO	NO			0	0							4														
<b>TOTAL FOR MAP NO. 28</b>																																		
44918.1.29 (R-5788HM)	Hoke	29	NC 211 (W PROSPECT AVE) AT CAMPUS AVE	RAEFORD		2		NO	NO			0	0							4														
<b>TOTAL FOR MAP NO. 29</b>																																		
44918.1.29 (R-5788HM)	Hoke	30	US 401 BUS (HARRIS AVE) AT S MAGNOLIA ST	RAEFORD		2		NO	NO			0	0							4														
<b>TOTAL FOR MAP NO. 30</b>																																		
44918.1.29 (R-5788HM)	Hoke	31	US 401 BUS (HARRIS AVE) AT HIGHLAND ST	RAEFORD		2		NO	NO			0	0							2														
<b>TOTAL FOR MAP NO. 31</b>																																		
44918.1.29 (R-5788HM)	Hoke	32	US 401 BUS (HARRIS AVE) AT STEWART ST	RAEFORD		2		NO	NO			0	0							2														
<b>TOTAL FOR MAP NO. 32</b>																																		
44918.1.29 (R-5788HM)	Hoke	33	SR 1405 (N MAIN ST) AT FIFTH AVE	RAEFORD		2		NO	NO			0	0							3														
<b>TOTAL FOR MAP NO. 33</b>																																		
44918.1.29 (R-5788HM)	Hoke	34	SR 1405 (N MAIN ST) AT SIXTH AVE	RAEFORD		2		NO	NO			0	0							4														
<b>TOTAL FOR MAP NO. 34</b>																																		
44918.1.29 (R-5788HM)	Hoke	35	SR 1405 (N MAIN ST) AT SEVENTH AVE	RAEFORD		2		NO	NO			0	0							2														
<b>TOTAL FOR MAP NO. 35</b>																																		
<b>TOTAL FOR PROJ NO. 44918.1.29 (R-5788HM)</b>																																		
<b>GRAND TOTAL</b>																																		
														100	216	11	110	65.00	3															

PROJECT NO.	SHEET NO.	TOTAL NO.
44918.1.28 (R-5788HL), 44918.1.29 (R-5788HM)	3A	

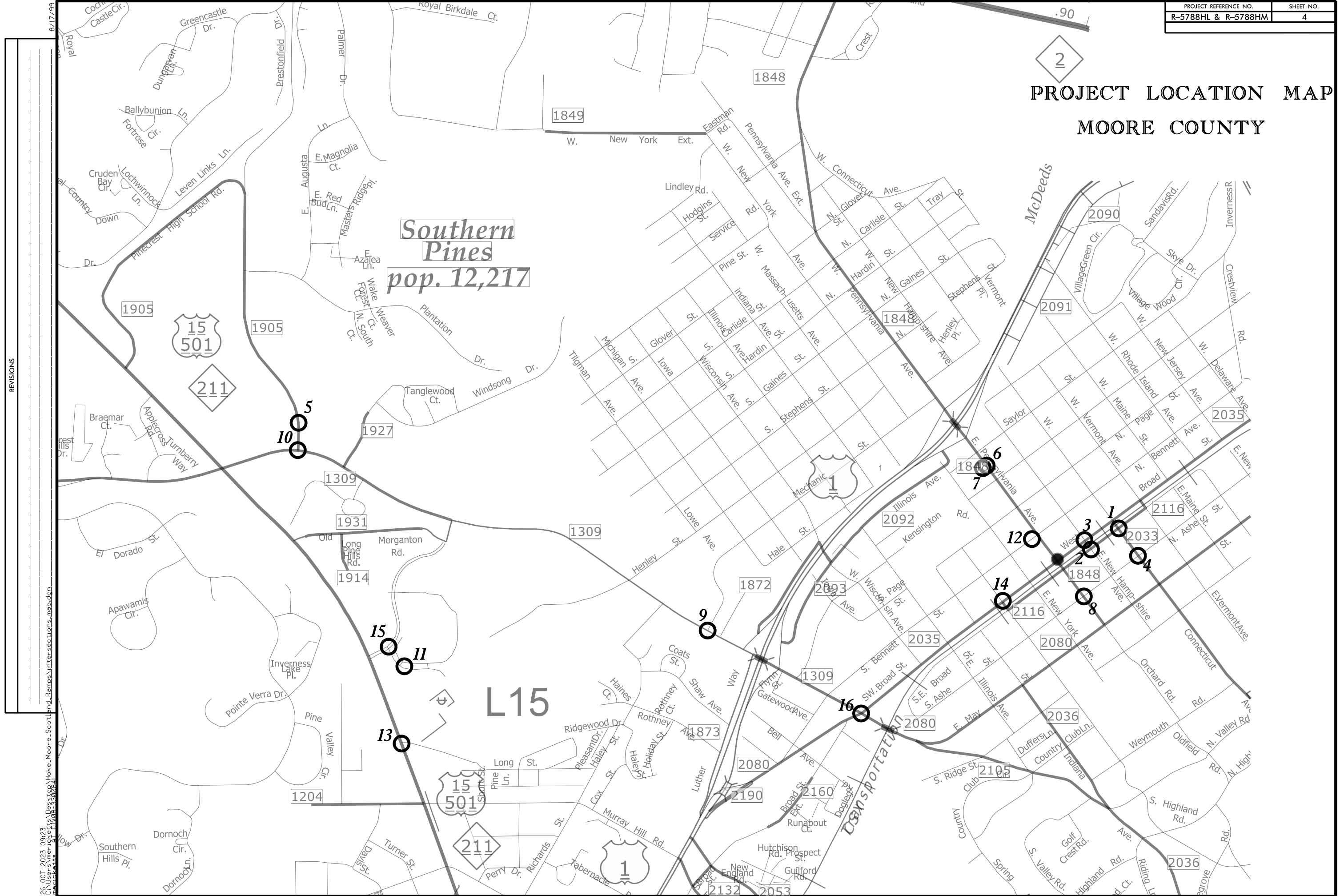
### THERMOPLASTIC AND PAINT QUANTITIES

PROJECT NO	COUNTY	MAP NO	ROUTE	DESCRIPTION	TYP NO	LANES	LANE TYPE	LENGTH	WIDTH	BEGIN MP	END MP	445700000-N TEMPORARY TRAFFIC CONTROL LS
								MI	FT			
44918.1.28 (R-5788HL)	Moore	1	SR 2116 (NE BROAD ST) AT SR 2033 (E CONNECTICUT AVE)	SOUTHERN PINES		2				0	0	
<b>TOTAL FOR MAP NO. 1</b>												
44918.1.28 (R-5788HL)	Moore	2	SR 2116 (NE BROAD ST) AT E NEW HAMPSHIRE AVE	SOUTHERN PINES		2				0	0	
<b>TOTAL FOR MAP NO. 2</b>												
44918.1.28 (R-5788HL)	Moore	3	SR 2035 (NW BROAD ST) AT W NEW HAMPSHIRE AVE	SOUTHERN PINES		2				0	0	
<b>TOTAL FOR MAP NO. 3</b>												
44918.1.28 (R-5788HL)	Moore	4	SR 2033 (E CONNECTICUT AVE) AT N ASHE ST	SOUTHERN PINES		2				0	0	
<b>TOTAL FOR MAP NO. 4</b>												
44918.1.28 (R-5788HL)	Moore	5	SR 1905 (FELTON CAPEL LN) AT DAIRY QUEEN	SOUTHERN PINES		2				0	0	
<b>TOTAL FOR MAP NO. 5</b>												
44918.1.28 (R-5788HL)	Moore	6	SR 1848 (W PENNSYLVANIA AVE) AT BOLES FUNERAL HOME	SOUTHERN PINES		2				0	0	
<b>TOTAL FOR MAP NO. 6</b>												
44918.1.28 (R-5788HL)	Moore	7	SR 1848 (W PENNSYLVANIA AVE) AT POLICE DEPARTMENT	SOUTHERN PINES		2				0	0	
<b>TOTAL FOR MAP NO. 7</b>												
44918.1.28 (R-5788HL)	Moore	8	SR 1848 (E PENNSYLVANIA AVE) AT N ASHE ST	SOUTHERN PINES		2				0	0	
<b>TOTAL FOR MAP NO. 8</b>												
44918.1.28 (R-5788HL)	Moore	9	SR 1309 (W MORGANTON RD) AT S MECHANIC ST	SOUTHERN PINES		2				0	0	
<b>TOTAL FOR MAP NO. 9</b>												
44918.1.28 (R-5788HL)	Moore	10	SR 1309 (W MORGANTON RD) AT FELTON CAPEL LN	SOUTHERN PINES		2				0	0	
<b>TOTAL FOR MAP NO. 10</b>												
44918.1.28 (R-5788HL)	Moore	11	SOUTHERN RD AT VARIOUS DRIVEWAYS	SOUTHERN PINES - NON SYSTEM		2				0	0	*
<b>TOTAL FOR MAP NO. 11</b>												
44918.1.28 (R-5788HL)	Moore	12	S BENNETT ST AT MUNICIPAL PARKING	SOUTHERN PINES - NON SYSTEM		2				0	0	
<b>TOTAL FOR MAP NO. 12</b>												
44918.1.28 (R-5788HL)	Moore	13	PARTNER CIRCLE AT VARIOUS DRIVEWAYS	SOUTHERN PINES - NON SYSTEM		2				0	0	
<b>TOTAL FOR MAP NO. 13</b>												
44918.1.28 (R-5788HL)	Moore	14	MASSACHUSETTS AVE AT FIRST BANK	SOUTHERN PINES - NON SYSTEM		2				0	0	
<b>TOTAL FOR MAP NO. 14</b>												
44918.1.28 (R-5788HL)	Moore	15	BRUCEWOOD RD AT VARIOUS DRIVEWAYS	SOUTHERN PINES - NON SYSTEM		2				0	0	
<b>TOTAL FOR MAP NO. 15</b>												
44918.1.28 (R-5788HL)	Moore	16	OLD US 1 AT SR 2080 (W MORGANTON RD)	SOUTHERN PINES		2				0	0	
<b>TOTAL FOR MAP NO. 16</b>												
44918.1.28 (R-5788HL)	Scotland	17	US 401 (N MAIN ST) AT CRONLY ST	LAURINBURG		2				0	0	
<b>TOTAL FOR MAP NO. 17</b>												
44918.1.28 (R-5788HL)	Scotland	18	US 401 (N MAIN ST) AT MCKAY ST	LAURINBURG		2				0	0	
<b>TOTAL FOR MAP NO. 18</b>												
44918.1.28 (R-5788HL)	Scotland	19	US 401 (N MAIN ST) AT FAIRLY ST	LAURINBURG		2				0	0	
<b>TOTAL FOR MAP NO. 19</b>												
44918.1.28 (R-5788HL)	Scotland	20	US 401 (N MAIN ST) AT ROPER ST	LAURINBURG		2				0	0	
<b>TOTAL FOR MAP NO. 20</b>												
44918.1.28 (R-5788HL)	Scotland	21	US 401 (N MAIN ST) AT RAILROAD ST	LAURINBURG		2				0	0	
<b>TOTAL FOR MAP NO. 21</b>												
<b>TOTAL FOR PROJ NO. 44918.1.28 (R-5788HL)</b>												
												<b>1.0000</b>
44918.1.29 (R-5788HM)	Scotland	22	US 401 AT E FIRST ST	WAGRAM		2				0	0	
<b>TOTAL FOR MAP NO. 22</b>												
44918.1.29 (R-5788HM)	Scotland	23	US 401 AT BUNDY ST	WAGRAM		2				0	0	
<b>TOTAL FOR MAP NO. 23</b>												
44918.1.29 (R-5788HM)	Hoke	24	NC 211 (W PROSPECT AVE) AT GREEN ST	RAEFORD		2				0	0	
<b>TOTAL FOR MAP NO. 24</b>												
44918.1.29 (R-5788HM)	Hoke	25	NC 211 (W PROSPECT AVE) AT N BETHEL RD	RAEFORD		2				0	0	
<b>TOTAL FOR MAP NO. 25</b>												
44918.1.29 (R-5788HM)	Hoke	26	NC 211 (W PROSPECT AVE) AT N FULTON RD	RAEFORD		2				0	0	
<b>TOTAL FOR MAP NO. 26</b>												
44918.1.29 (R-5788HM)	Hoke	27	NC 211 (W PROSPECT AVE) AT N MAGNOLIA ST	RAEFORD		2				0	0	
<b>TOTAL FOR MAP NO. 27</b>												
44918.1.29 (R-5788HM)	Hoke	28	NC 211 (W PROSPECT AVE) AT N MAIN ST	RAEFORD		2				0	0	
<b>TOTAL FOR MAP NO. 28</b>												
44918.1.29 (R-5788HM)	Hoke	29	NC 211 (W PROSPECT AVE) AT CAMPUS AVE	RAEFORD		2				0	0	
<b>TOTAL FOR MAP NO. 29</b>												
44918.1.29 (R-5788HM)	Hoke	30	US 401 BUS (HARRIS AVE) AT S MAGNOLIA ST	RAEFORD		2				0	0	
<b>TOTAL FOR MAP NO. 30</b>												
44918.1.29 (R-5788HM)	Hoke	31	US 401 BUS (HARRIS AVE) AT HIGHLAND ST	RAEFORD		2				0	0	
<b>TOTAL FOR MAP NO. 31</b>												
44918.1.29 (R-5788HM)	Hoke	32	US 401 BUS (HARRIS AVE) AT STEWART ST	RAEFORD		2				0	0	
<b>TOTAL FOR MAP NO. 32</b>												
44918.1.29 (R-5788HM)	Hoke	33	SR 1405 (N MAIN ST) AT FIFTH AVE	RAEFORD		2				0	0	
<b>TOTAL FOR MAP NO. 33</b>												
44918.1.29 (R-5788HM)	Hoke	34	SR 1405 (N MAIN ST) AT SIXTH AVE	RAEFORD		2				0	0	
<b>TOTAL FOR MAP NO. 34</b>												
44918.1.29 (R-5788HM)	Hoke	35	SR 1405 (N MAIN ST) AT SEVENTH AVE	RAEFORD		2				0	0	
<b>TOTAL FOR MAP NO. 35</b>												
<b>TOTAL FOR PROJ NO. 44918.1.29 (R-5788HM)</b>												
												<b>1.000</b>
<b>GRAND TOTAL</b>												
												<b>1.000</b>



# PROJECT LOCATION MAP

## MOORE COUNTY

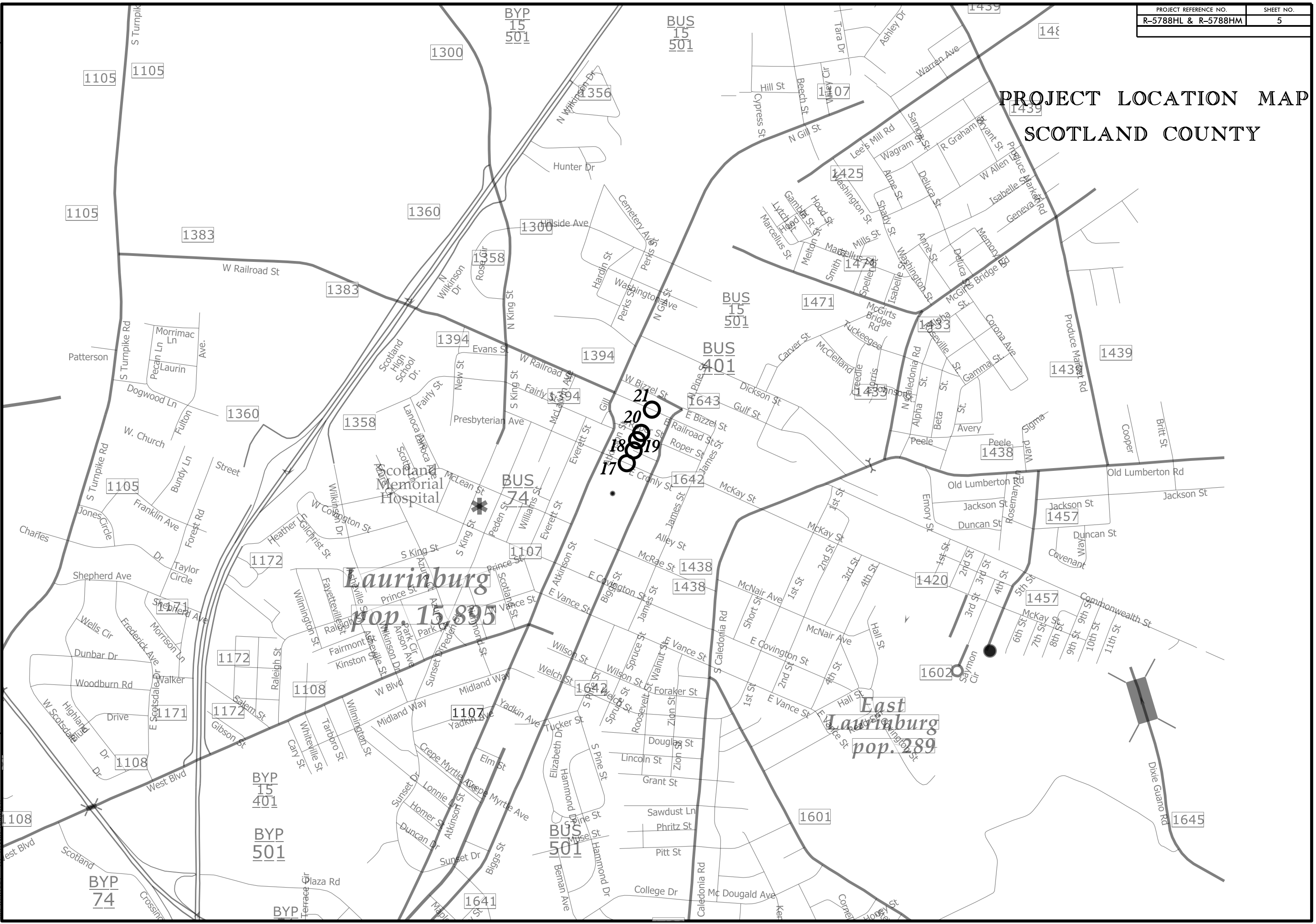


REVISIONS

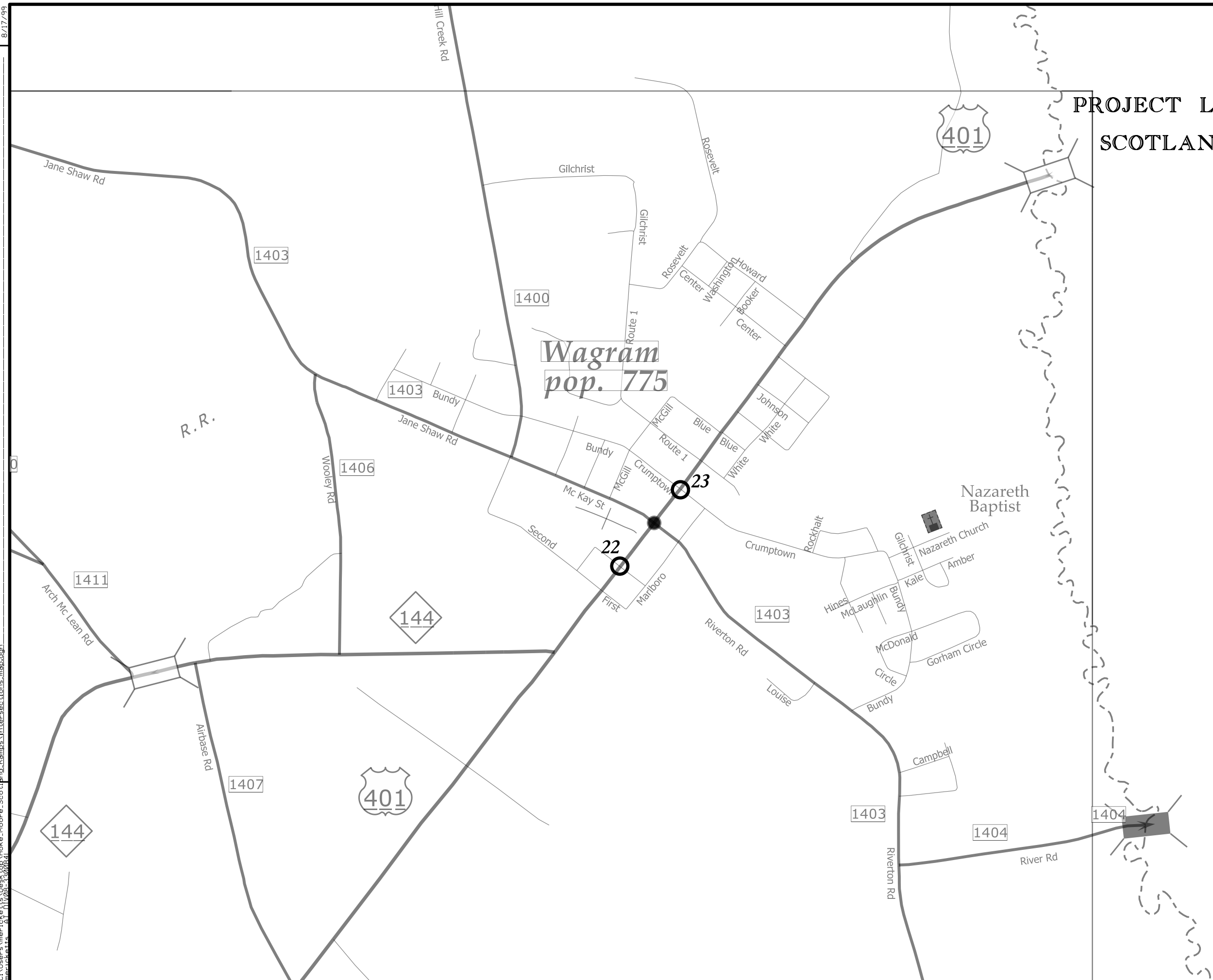
8/17/99  
 26-OCT-2023 09:23  
 C:\Users\meyer\OneDrive\Desktop\Hoke-Moore\_Scotland\_Ramps\intersections\_map.dgn  
 3/11/2024 10:08:41

# PROJECT LOCATION MAP SCOTLAND COUNTY

REVISIONS  
 26-OCT-2023 09:23  
 C:\Users\mrtolte\OneDrive\Desktop\Hoke-Moore\_Scotland\_Ramps\intersections\_map.dgn  
 8/17/99



# PROJECT LOCATION MAP SCOTLAND COUNTY

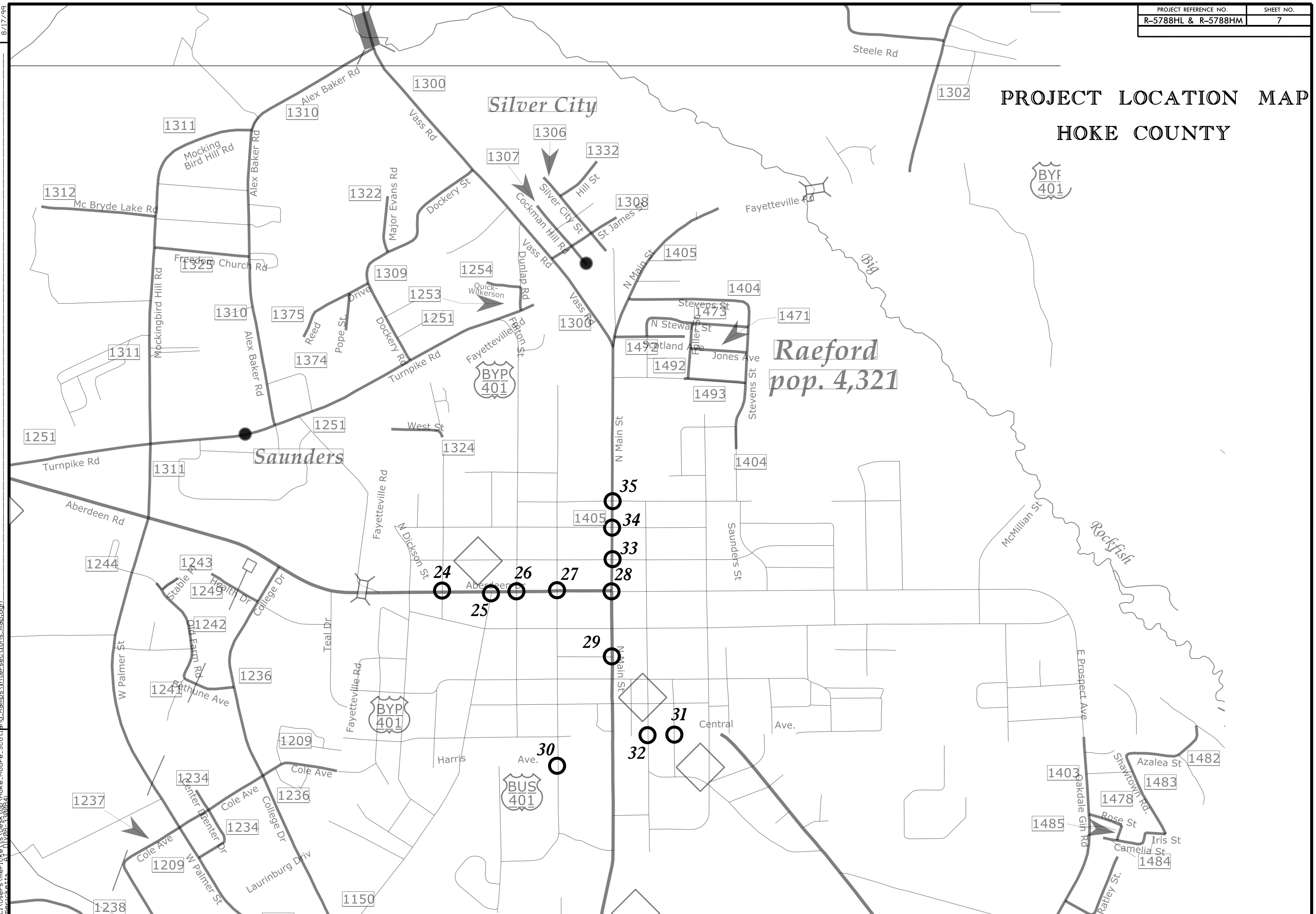


REVISIONS  
 0

26-OCT-2023 09:23  
 C:\User\merick\Documents\Hoke-Moore\_Scotland\_Ramps\intersections\_map.dgn  
 merick

# PROJECT LOCATION MAP

## HOKE COUNTY



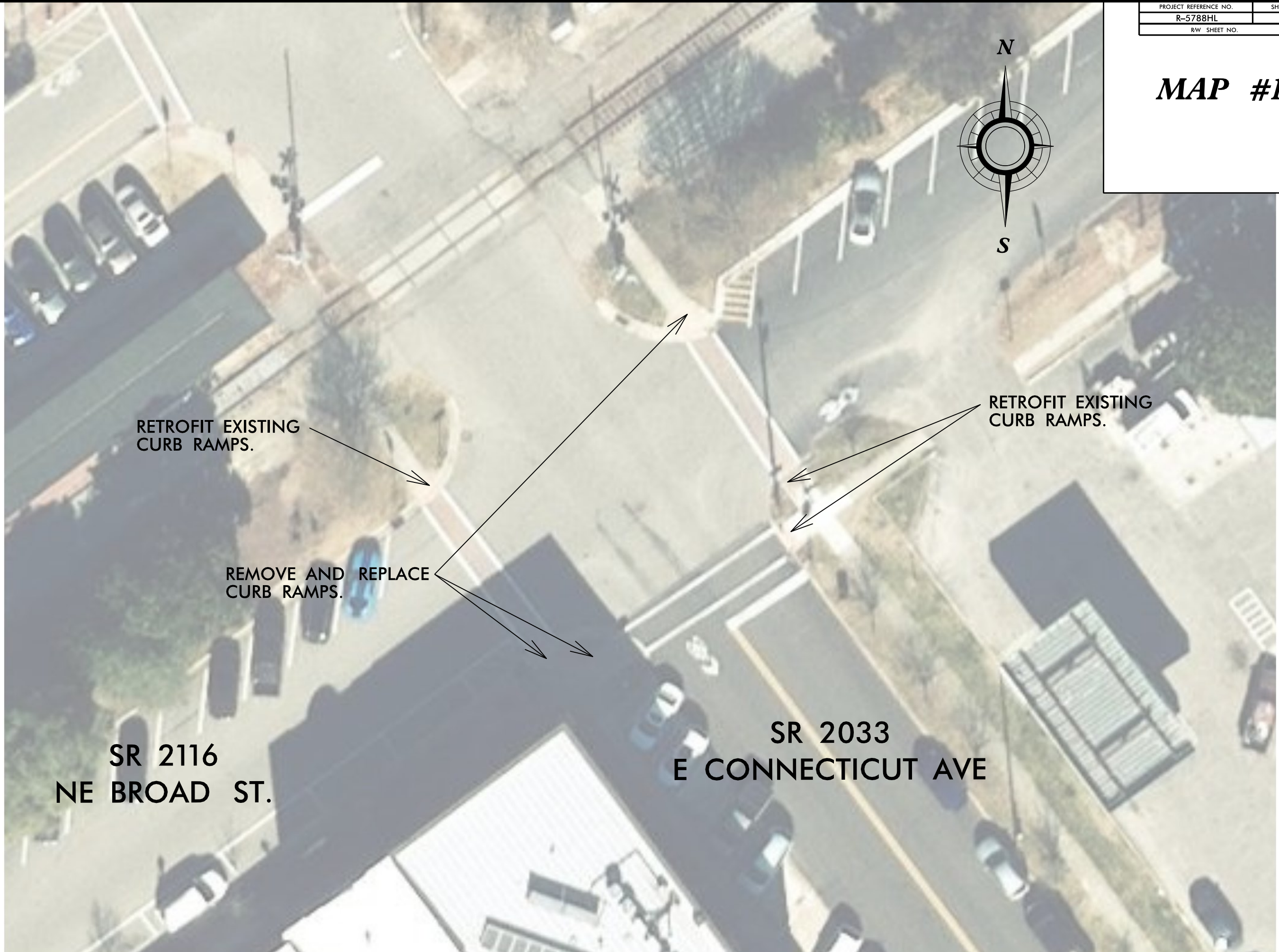
REVISIONS

26-OCT-2023 09:23  
 C:\Users\merick\OneDrive\Desktop\Hoke-Moore\_Scotland\_Ramps\intersections\_map.dgn  
 merick



PROJECT REFERENCE NO.	SHEET NO.
R-5788HL	11
RW SHEET NO.	

**MAP #1**



RETROFIT EXISTING CURB RAMPS.

RETROFIT EXISTING CURB RAMPS.

REMOVE AND REPLACE CURB RAMPS.

SR 2116  
NE BROAD ST.

SR 2033  
E CONNECTICUT AVE

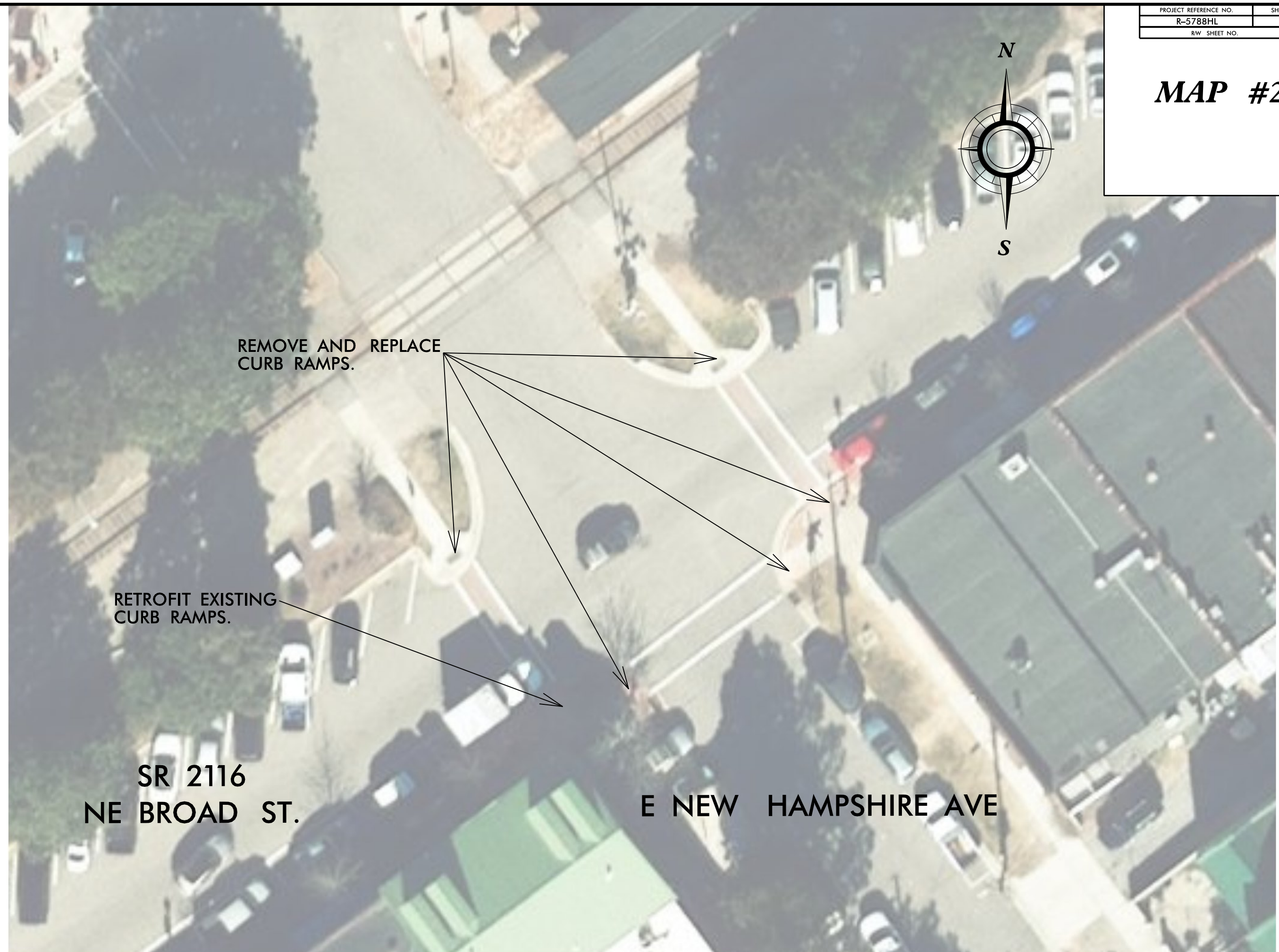
REVISIONS

26-JUL-2023 18:18  
 Z:\-dy\moore\18-5788HL-HM-ADA-Curb-Ramps\18-5788HL-HM\_maps1-10.dgn  
 8/17/99



PROJECT REFERENCE NO.	SHEET NO.
R-5788HL	12
RW SHEET NO.	

**MAP #2**



REMOVE AND REPLACE  
CURB RAMPS.

RETROFIT EXISTING  
CURB RAMPS.

SR 2116  
NE BROAD ST.

E NEW HAMPSHIRE AVE

REVISIONS

26-JUL-2023 18:20  
Z:\vd\moore\12-5788HL-HM\_ADA-Curb-Ramps\Plans\12-5788HL-HM\_maps1-10.dgn  
mrc:etk



PROJECT REFERENCE NO.	SHEET NO.
R-5788HL	13
RW SHEET NO.	

# MAP #3



W NEW HAMPSHIRE AVE

SR 2035  
NW BROAD ST

REMOVE AND REPLACE  
CURB RAMP.



REVISIONS

26-JUL-2023 18:22  
Z:\dy\moore\14-5788HL-HM\_ADA-Curb-Ramps\14-5788HL-HM\_maps1-10.dgn  
mrc:etk



PROJECT REFERENCE NO.	SHEET NO.
R-5788HL	14
RW SHEET NO.	

**MAP #4**



REMOVE AND REPLACE CURB RAMPS. REMOVE AND REPLACE ASPHALT AS NEEDED.



**N ASHE ST**

**SR 2033  
E CONNECTICUT AVE**

REVISIONS

26-JUL-2023 18:24  
 Z:\-dly\moore\14-5788HL-HM\_ADA-Curb-Ramps\14-5788HL-HM\_maps1-10.dgn  
 8/17/99



PROJECT REFERENCE NO.	SHEET NO.
R-5788HL	15
RW SHEET NO.	

**MAP #5**



**DAIRY  
QUEEN**

**SR 1905  
FELTON CAPEL LN**

REMOVE AND REPLACE  
CURB RAMPS.

**SR 1905  
FELTON CAPEL LN**

REVISIONS

26-JUL-2023 18:26  
Z:\-dy\moore\15-5788HL-HM\_ADA-Curb-Plans\15-5788HL-HM\_maps1-10.dgn  
mrc:etk



PROJECT REFERENCE NO.	SHEET NO.
R-5788HL	16
RW SHEET NO.	

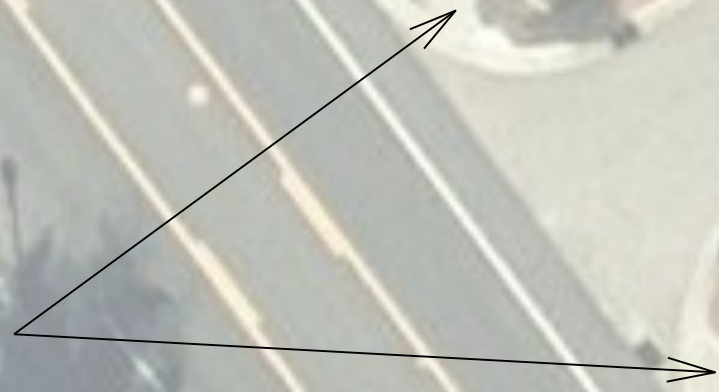
**MAP #6**



**SR 1848  
W PENNSYLVANIA AVE**

**BOLES FUNERAL  
HOME**

**REMOVE AND REPLACE  
CURB RAMPS.**



**SR 1848  
W PENNSYLVANIA AVE**

REVISIONS

26-JUL-2023 18:28  
Z:\-dy\moore\16-5788HL-HM\_ADA-Curb-Ramps\16-5788HL-HM\_maps1-10.dgn  
11/08/23 3:00:41



PROJECT REFERENCE NO.	SHEET NO.
R-5788HL	17
RW SHEET NO.	

**MAP #7**



**SR 1848  
W PENNSYLVANIA AVE**

**SR 1848  
W PENNSYLVANIA AVE**

**POLICE  
DEPARTMENT**

REMOVE AND REPLACE  
CURB RAMPS. CONSTRUCT  
SIDEWALK AS NEEDED.



REVISIONS

26-JUL-2023 18:30  
Z:\-dy\moore\17-5788HL-HM\_ADA-Curb-Ramps\17-5788HL-HM\_maps1-10.dgn  
mrcd\etts



PROJECT REFERENCE NO.	SHEET NO.
R-5788HL	18
RW SHEET NO.	

# MAP #8



RETROFIT EXISTING CURB RAMPS.

REMOVE AND REPLACE CURB RAMPS.

N ASHE ST

SR 1848  
E PENNSYLVANIA AVE

REVISIONS

26-JUL-2023 18:33  
Z:\-dy\moore\18-5788HL-HM\_ADA-Curb-Ramps\Plans\18-5788HL-HM\_maps1-10.dgn  
mrcd\etts



PROJECT REFERENCE NO.	SHEET NO.
R-5788HL	19
RW SHEET NO.	

# MAP #9



S MECHANIC ST

SR 1309  
W MORGANTON RD

REMOVE AND REPLACE  
CURB RAMPS.



REVISIONS

26-JUL-2023 18:35  
Z:\rd\moore\19-5788HL-HM\_ADA-Curb-Ramps\19-5788HL-HM\_maps1-10.dgn  
mrc



PROJECT REFERENCE NO.	SHEET NO.
R-5788HL	20
RW SHEET NO.	

**MAP #10**



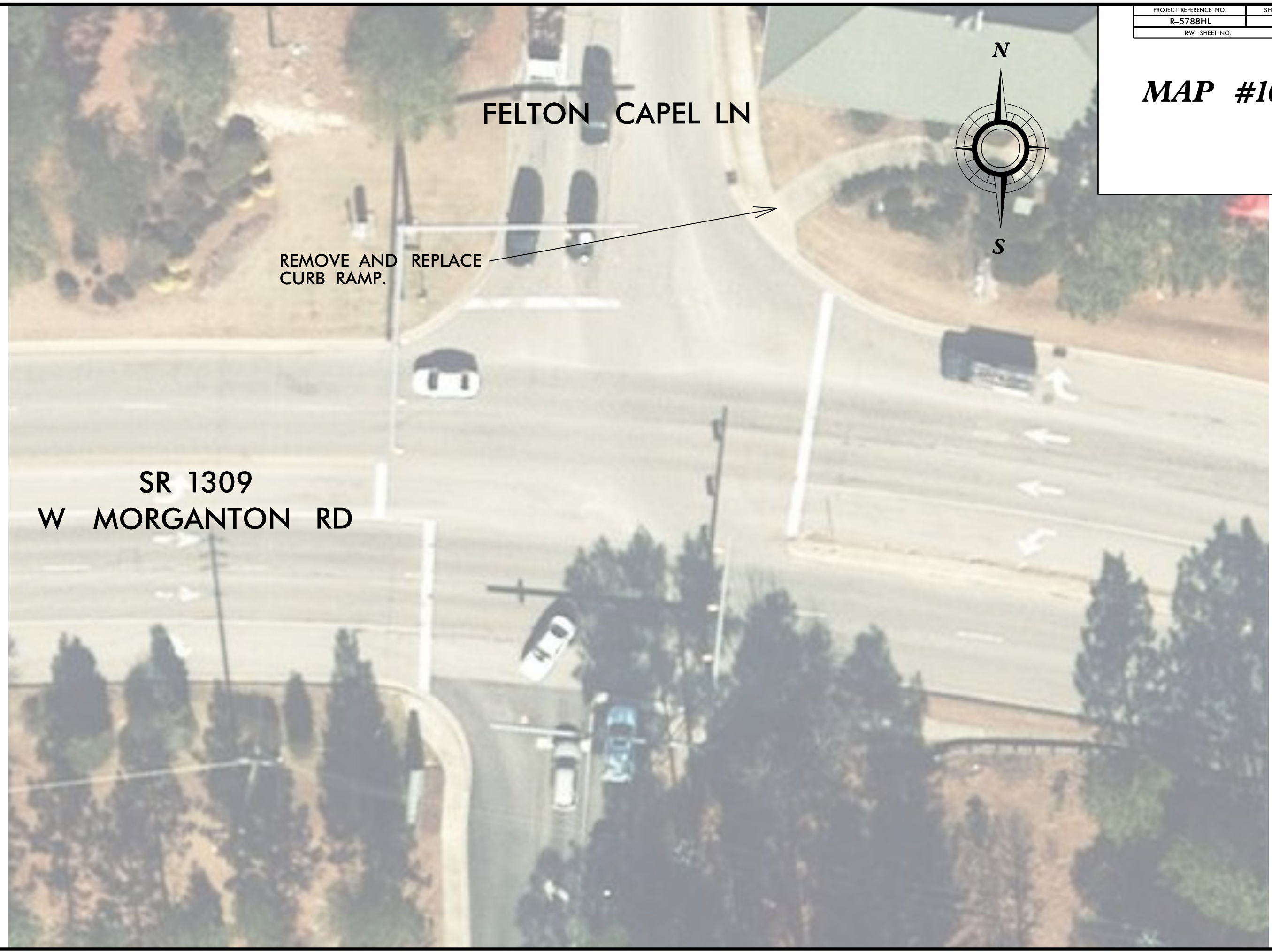
FELTON CAPEL LN

REMOVE AND REPLACE CURB RAMP.

SR 1309  
W MORGANTON RD

REVISIONS

26-JUL-2023 18:37  
Z:\-dy\moore\1-R-5788HL-HM-ADA-Curb-Plans\1-R-5788HL-HM\_maps1-10.dgn  
moore





PROJECT REFERENCE NO.	SHEET NO.
R-5788HL	21
RW SHEET NO.	

# MAP #11



DRIVEWAY

REMOVE AND REPLACE CURB RAMPS.



SOUTHERN RD  
(275 FT EAST OF  
BRUCEWOOD RD)

REVISIONS

28-JUL-2023 09:23  
 21-dj\moore\R-5788HL-HM-ADA-Curb.Ramps\Plans\R-5788HL-HM\_meps11-20.dgn  
 8/17/99



PROJECT REFERENCE NO.	SHEET NO.
R-5788HL	22
RW SHEET NO.	

**MAP #12**



**MUNICIPAL  
PARKING**

← REMOVE AND REPLACE  
CURB RAMPS.

**S BENNETT ST  
(200 FT SOUTH OF  
PENNSYLVANIA AVE)**

REVISIONS

28-JUL-2023 09:25  
 21-V-dj\moore\R-5788HL-HM-ADA-Curb-Ramps\Plans\R-5788HL-HM\_mops11-20.dgn  
 Al 01008 300841  
 8/17/99



PROJECT REFERENCE NO.	SHEET NO.
R-5788HL	23
RW SHEET NO.	

**MAP #13**



REMOVE AND REPLACE  
CURB RAMPS.

**PARTNER  
CIRCLE  
(450 FT WEST  
OF US 15-501)**

REVISIONS

28-JUL-2023 14:51  
21-djvinoore R-5788HL-HM-ADA-Curb-Ramps\Plans\15-5788HL-HM\_meps11-20.dgn  
mccickett



PROJECT REFERENCE NO.	SHEET NO.
R-5788HL	24
RW SHEET NO.	

**MAP #14**



**MASSACHUSETTS AVE**

**REMOVE AND REPLACE CURB RAMPS.**



**FIRST BANK**

**MASSACHUSETTS AVE**

REVISIONS

28-JUL-2023 14:53  
 21-dj\moore\p\5788HL-HM-ADA-Curb-Ramps\Plans\R-5788HL-HM\_meps11-20.dgn  
 8/17/99



PROJECT REFERENCE NO.	SHEET NO.
R-5788HL	25
RW SHEET NO.	

# MAP #15



**BRUCEWOOD RD**

**SOUTHERN RD**

REMOVE AND REPLACE CURB RAMPS.

REMOVE AND REPLACE SIDEWALK SECTIONS AS NEEDED.



REVISIONS

28-JUL-2023 14:56  
 Z:\d\moore\110008\110008-3000841  
 21-d\moore\110008\110008-3000841-HM-ADA-Curb-Ramps\Plans\110008-3000841-HM\_meps11-20.dgn



PROJECT REFERENCE NO.	SHEET NO.
R-5788HL	26
RW SHEET NO.	

# MAP #15



BRUCEWOOD RD

REMOVE AND REPLACE CURB RAMPS.



KOHL'S DRIVEWAY

BRUCEWOOD RD

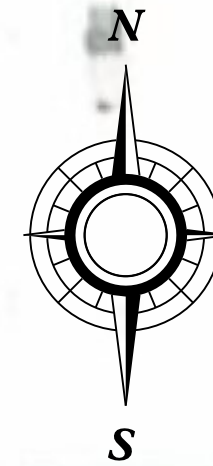
REVISIONS

28-JUL-2023 12:15  
21-dj\moore\15-5788HL-HM-ADA-Curb-Ramps\15-5788HL-HM\_meps11-20.dgn  
mccickett

8/17/99

PROJECT REFERENCE NO.	SHEET NO.
R-5788HL	27
RW SHEET NO.	

**MAP #15**



**BRUCEWOOD RD**

**HOBBY LOBBY DRIVEWAY**

**REMOVE AND REPLACE CURB RAMPS.**

**BRUCEWOOD RD**

REVISIONS
-----------

28-JUL-2023 12:18  
 Z:\-d\moore\110008-300831  
 21-ADA-Curb.Ramps\Plans\R-5788HL\_HM\_mops11-20.dgn  
 8/17/99



PROJECT REFERENCE NO.	SHEET NO.
R-5788HL	28
RW SHEET NO.	

**MAP #15**



**BRUCEWOOD RD**

**RESIDENCE INN  
DRIVEWAY**

**REMOVE AND REPLACE  
CURB RAMPS.**

**DRIVEWAY ACROSS  
FROM RESIDENCE INN**

**BRUCEWOOD RD**

REVISIONS

28-JUL-2023 12:20  
 21-dj\moore\1R-5788HL-HM-ADA-Curb-Ramps\1R-5788HL-HM\_meps11-20.dgn  
 8/17/99



PROJECT REFERENCE NO.	SHEET NO.
R-5788HL	29
RW SHEET NO.	

**MAP #15**



**TERRA BELLA  
DRIVEWAY**

**BRUCEWOOD RD**

**BRUCEWOOD RD**

**REMOVE AND REPLACE  
CURB RAMPS.**



REVISIONS

8/17/99

28-JUL-2023 12:24  
 21-dj\moore\1-R-5788HL-HM-ADA-Curb-Ramps\1-R-5788HL-HM\_meps11-20.dgn  
 mrcickettis Al 01008 30084



PROJECT REFERENCE NO.	SHEET NO.
R-5788HL	30
RW SHEET NO.	

# MAP #15



BRUCEWOOD RD

REMOVE AND REPLACE CURB RAMPS.



SANDHILLS CINEMA SOUTH ENTRANCE

BRUCEWOOD RD

REVISIONS

28-JUL-2023 12:22  
Z:\d\moore\12-5788HL-HM-ADA-Curb-Ramps\Plans\12-5788HL-HM\_meps11-20.dgn  
mcclellan AT 010088-300841

8/17/99



PROJECT REFERENCE NO.	SHEET NO.
R-5788HL	31
RW SHEET NO.	

**MAP #16**

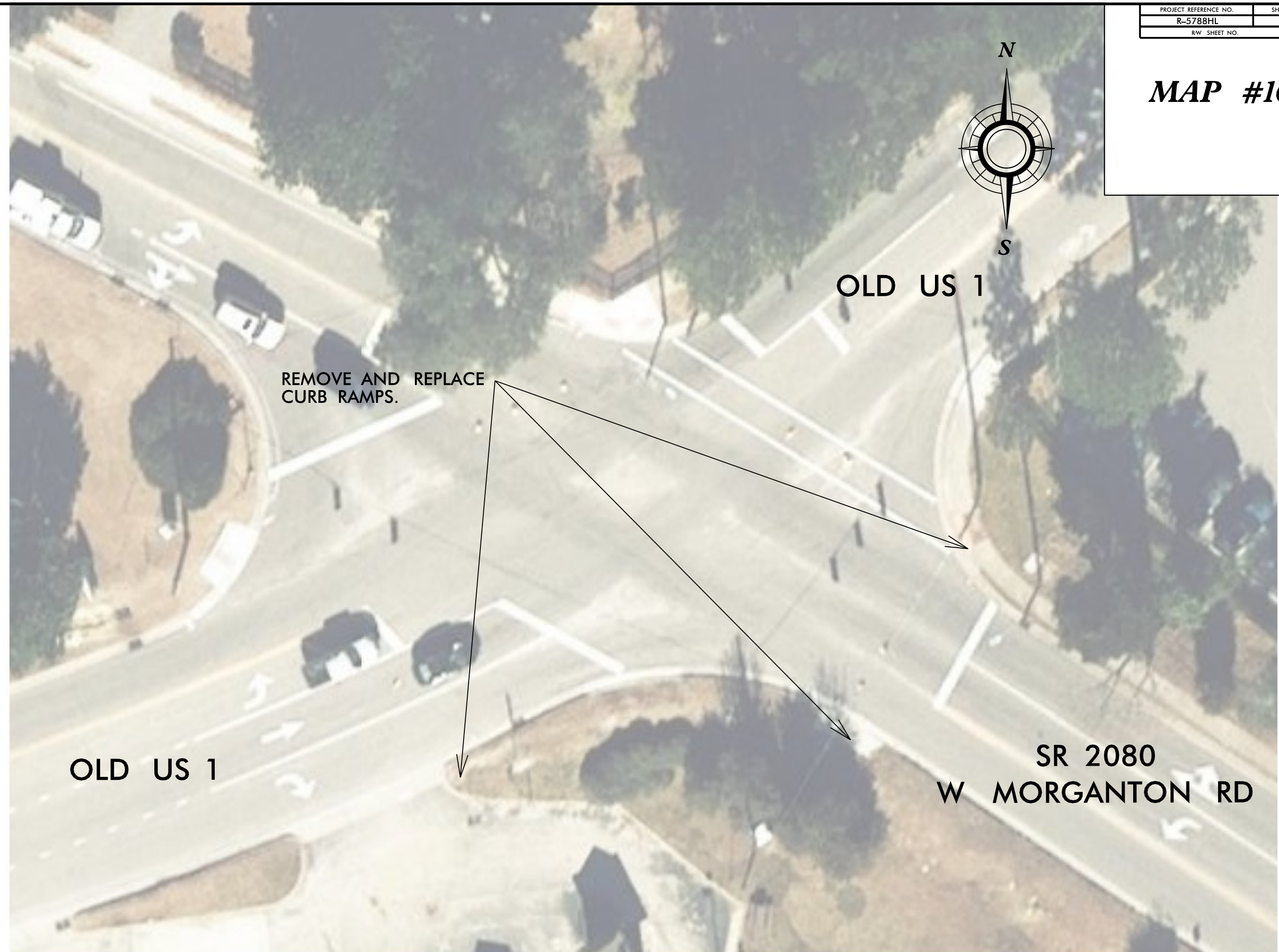


**OLD US 1**

**REMOVE AND REPLACE CURB RAMPS.**

**OLD US 1**

**SR 2080  
W MORGANTON RD**



REVISIONS

28-JUL-2023 14:58  
 21-dj\moore\Projects\5788HL-HM-ADA-Curb-Ramps\1\5788HL-HM\_meps11-20.dgn  
 01/08/2023 11:00:00 AM

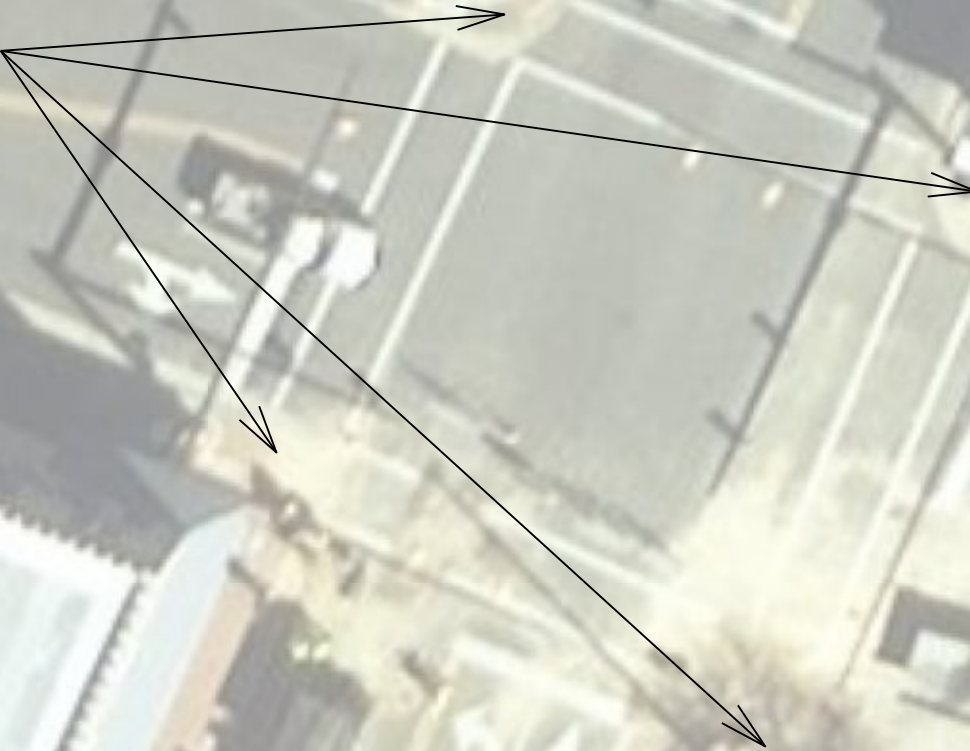


PROJECT REFERENCE NO.	SHEET NO.
R-5788HL	32
RW SHEET NO.	

# MAP #17



REMOVE AND REPLACE CURB RAMPS.



CRONLY ST

US 401  
N MAIN ST

REVISIONS

28-JUL-2023 12:05  
21-dj\nmoore R-5788HL-HM-ADA-Curb-Ramps\Plans\R-5788HL-HM\_meps11-20.dgn  
mccickett5 AT 01008-300841  
8/17/99



PROJECT REFERENCE NO.	SHEET NO.
R-5788HL	33
RW SHEET NO.	

**MAP #18**



US 401  
N MAIN ST

MCKAY ST

US 401  
N MAIN ST

RETROFIT EXISTING  
CURB RAMP.

REMOVE AND REPLACE  
CURB RAMP.

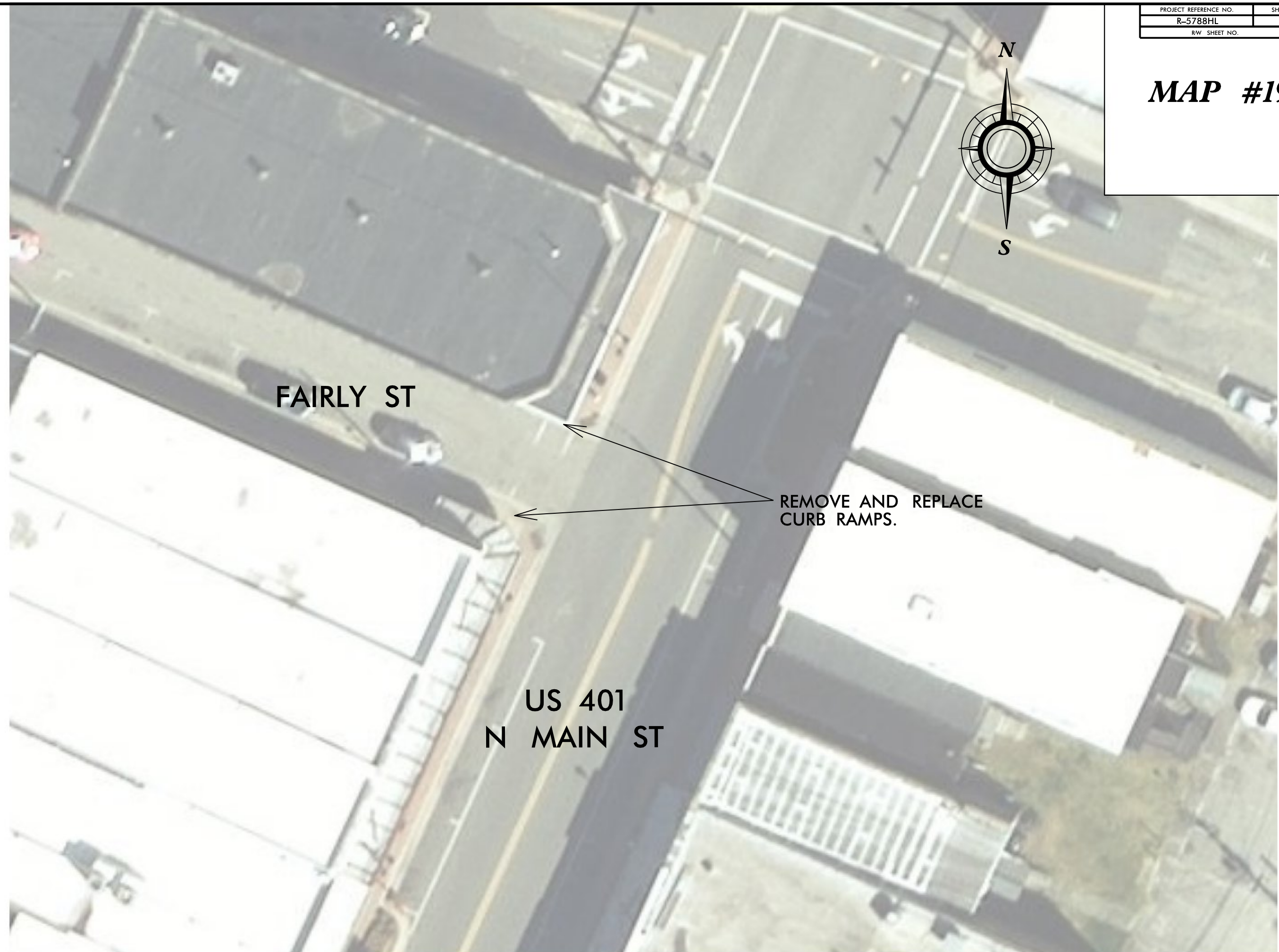
REVISIONS

28-JUL-2023 12:07  
 Z:\-dly\moore\18-5788HL-HM-ADA-Curb-Ramps\18-5788HL-HM\_meps11-20.dgn  
 8/17/99



PROJECT REFERENCE NO.	SHEET NO.
R-5788HL	34
RW SHEET NO.	

# MAP #19



REVISIONS

28-JUL-2023 12:09  
Z:\-dgv\moore\1R-5788HL-HM-ADA-Curb-Ramps\Plans\1R-5788HL-HM\_meps11-20.dgn  
mccickett

PROJECT REFERENCE NO.	SHEET NO.
R-5788HL	35
RW SHEET NO.	

**MAP #20**



**ROPER ST**

**REMOVE AND REPLACE  
CURB RAMPS.**

**ROPER ST**

**US 401  
N MAIN ST**

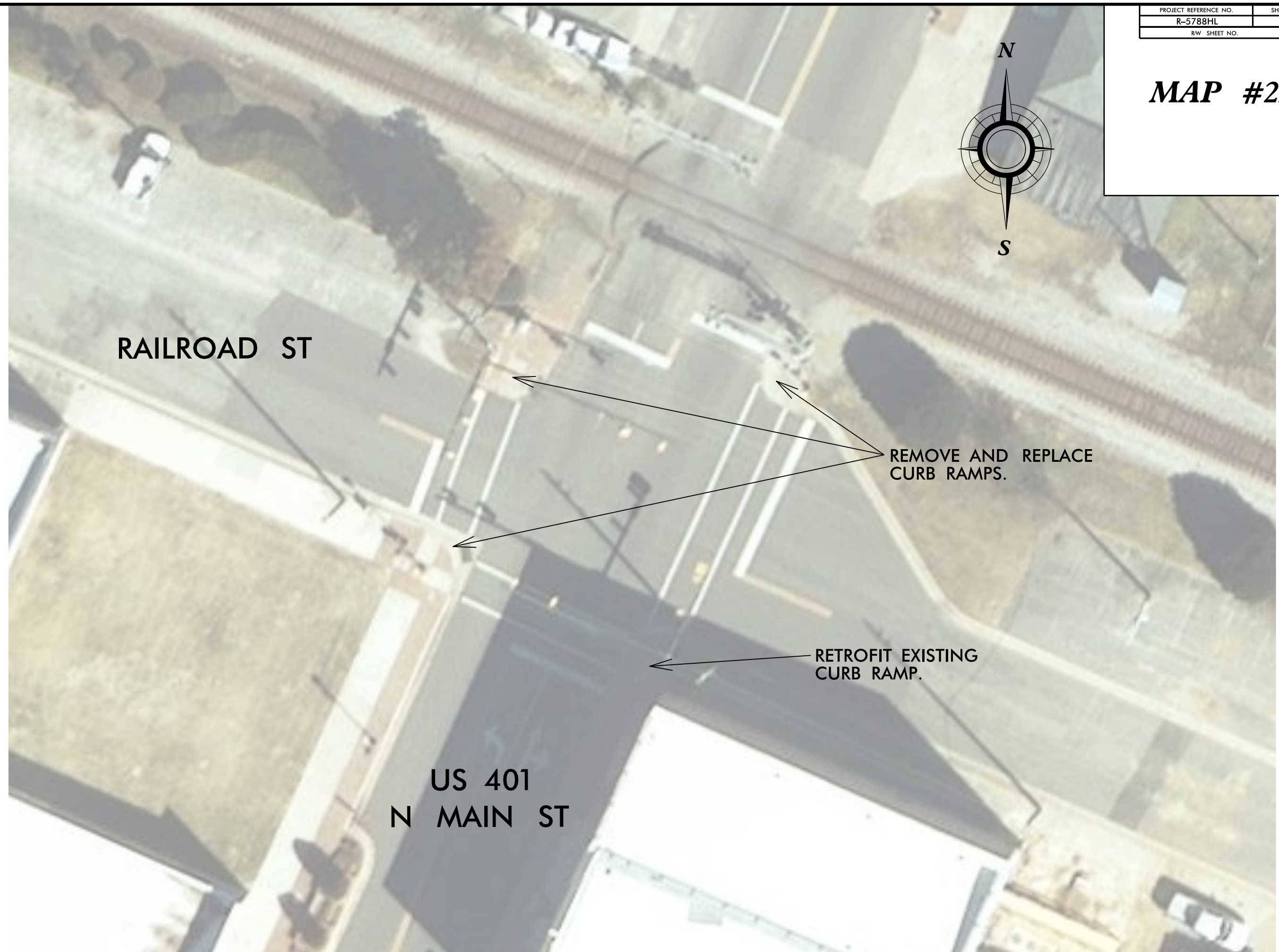
REVISIONS

28-JUL-2023 12:11  
 21-dj\nmoore  
 21-01008-30084  
 \R-5788HL-HM-ADA-Curb-Ramps\Plans\11-5788HL-HM\_meps11-20.dgn  
 8/17/99



PROJECT REFERENCE NO.	SHEET NO.
R-5788HL	36
RW SHEET NO.	

**MAP #21**



**RAILROAD ST**

**US 401  
N MAIN ST**

**REMOVE AND REPLACE  
CURB RAMPS.**

**RETROFIT EXISTING  
CURB RAMP.**

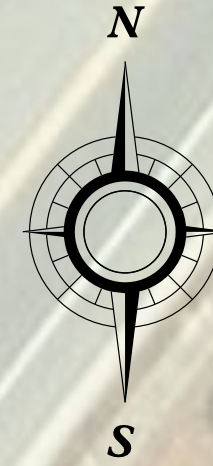
REVISIONS

27-JUL-2023 09:17  
Z:\v-dj\moore\1R-5788HL-HM-ADA-Curb-Ramps\1R-5788HL-HM\_maps21-30.dgn  
8/17/99



PROJECT REFERENCE NO.	SHEET NO.
R-5788HM	37
RW SHEET NO.	

**MAP #22**



**RICHMOND ST**

**US 401**

**REMOVE AND REPLACE CURB RAMPS.**

**US 401**

**E FIRST ST**

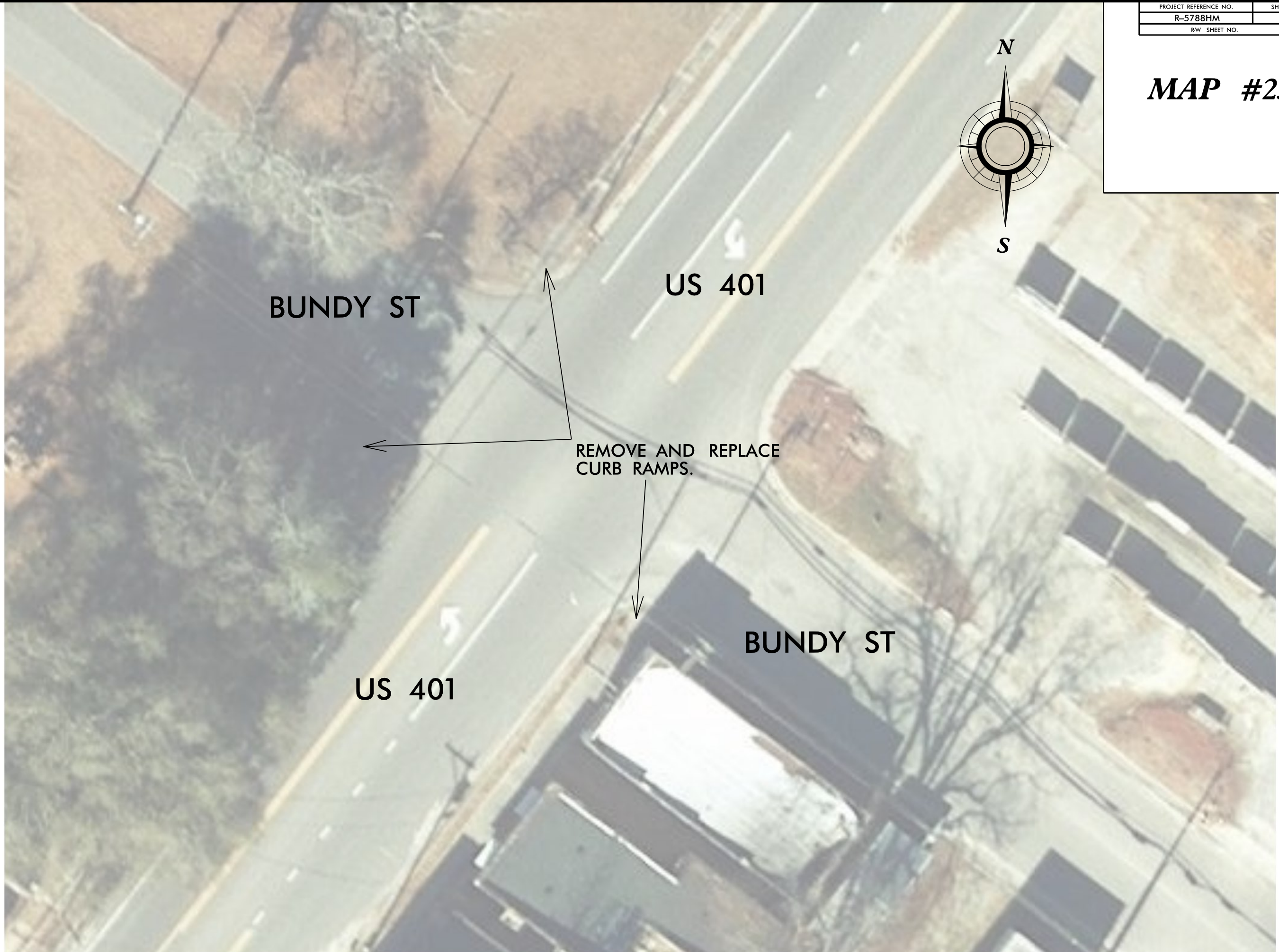
REVISIONS

25-OCT-2023 16:31  
 Z:\vd\vinore\p\5788\HM\_ADA\_Curb-Ramps\Plans\111-120.dgn  
 8/17/99



PROJECT REFERENCE NO.	SHEET NO.
R-5788HM	38
RW SHEET NO.	

**MAP #23**



**BUNDY ST**

**US 401**

**REMOVE AND REPLACE CURB RAMPS.**

**BUNDY ST**

**US 401**

REVISIONS

25-OCT-2023 16:34  
 Z:\cd\vinore\p\5788HM\_HM\_ADA\_Curb-Ramps\Plans\111-120.dgn  
 8/17/99



PROJECT REFERENCE NO.	SHEET NO.
R-5788HM	39
RW SHEET NO.	

**MAP #24**



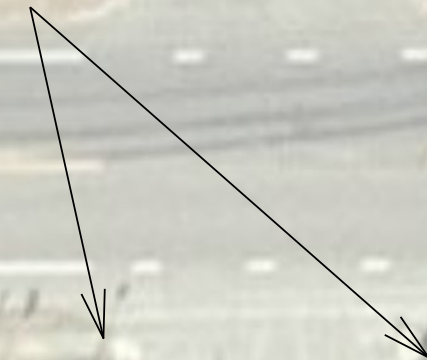
**GREEN ST**

**NC 211  
W PROSPECT AVE**

**NC 211  
W PROSPECT AVE**

**GREEN ST**

**REMOVE AND REPLACE  
CURB RAMPS.**



REVISIONS

8/17/99  
25-OCT-2023 16:36  
Z:\cd\vinore\p\5788HM-HM\_ADA-Curb-Ramps\p\5788HM\_maps\11-120.dgn  
vinore



PROJECT REFERENCE NO.	SHEET NO.
R-5788HM	40
RW SHEET NO.	

**MAP #25**



REMOVE AND REPLACE CURB RAMPS.



NC 211  
W PROSPECT AVE

NC 211  
W PROSPECT AVE

N BETHEL RD

REVISIONS

25-OCT-2023 16:33  
Z:\cd\vinore\p\5788HM\_HM\_ADA\_Curb-Ramps\Plans\11-120.dgn  
8/17/99



PROJECT REFERENCE NO.	SHEET NO.
R-5788HM	41
RW SHEET NO.	

**MAP #26**



**N FULTON RD**

REMOVE AND REPLACE CURB RAMPS.

**NC 211  
W PROSPECT AVE**

**NC 211  
W PROSPECT AVE**

REMOVE AND REPLACE CURB RAMPS.

**N FULTON RD**

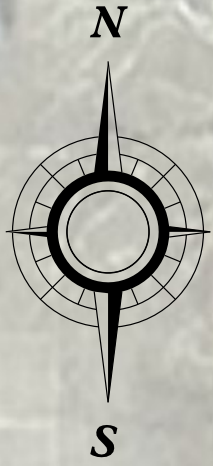
REVISIONS

25-OCT-2023 16:43  
 Z:\cd\vinore\16-5788\HM\_ADA\_Cur-b\_Ramps\16-5788\HM\_maps\11-120.dgn  
 8/17/99



PROJECT REFERENCE NO.	SHEET NO.
R-5788HM	42
RW SHEET NO.	

**MAP #27**



**N MAGNOLIA ST**

**REMOVE AND REPLACE CURB RAMPS.**

**NC 211  
W PROSPECT AVE**

**NC 211  
W PROSPECT AVE**

**REMOVE AND REPLACE CURB RAMPS.**

**N MAGNOLIA ST**

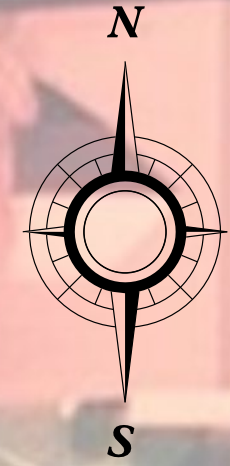
REVISIONS

25-OCT-2023 16:48  
 Z:\cdj\moore\16-5788HL-HM-ADA-Curb-Ramps\16-5788HL-HM\_maps\121-123.dgn  
 8/17/99



PROJECT REFERENCE NO.	SHEET NO.
R-5788HM	43
RW SHEET NO.	

# MAP #28



N MAIN ST

REMOVE AND REPLACE CURB RAMPS.

NC 211  
W PROSPECT AVE

NC 211  
W PROSPECT AVE

REMOVE AND REPLACE CURB RAMPS.

N MAIN ST

REVISIONS

25-OCT-2023 16:50  
Z:\cd\vinore\p\5788HL-HM-ADA-Curb-Plans\p\5788HL-HM\_maps\21-123.dgn  
8/17/99



PROJECT REFERENCE NO.	SHEET NO.
R-5788HM	44
RW SHEET NO.	

# MAP #29



NC 211  
MAIN ST

CAMPUS AVE

REMOVE AND REPLACE  
CURB RAMP.

NC 211  
MAIN ST

REVISIONS

25-OCT-2023 16:53  
Z:\cd\vinore\p\5788HM\_HM\_ADA\_Curb-Ramps\p\5788HM\_maps\121-129.dgn  
8/17/99



PROJECT REFERENCE NO.	SHEET NO.
R-5788HM	45
RW SHEET NO.	

**MAP #30**



**S MAGNOLIA ST**

**US 401 BUS  
HARRIS AVE**

**US 401 BUS  
HARRIS AVE**

**REMOVE AND REPLACE  
CURB RAMPS.**

**S MAGNOLIA ST**

REVISIONS

25-OCT-2023 16:55  
 Z:\cd\vinore\p\5788HL-HM\_ADA-Curb-Ramps\Plans\121-123.dgn  
 8/17/99



PROJECT REFERENCE NO.	SHEET NO.
R-5788HM	46
RW SHEET NO.	

**MAP #31**



**HIGHLAND ST**

**US 401 BUS  
HARRIS AVE**

**REMOVE AND REPLACE  
CURB RAMPS.**

**US 401 BUS  
HARRIS AVE**

**HIGHLAND ST**

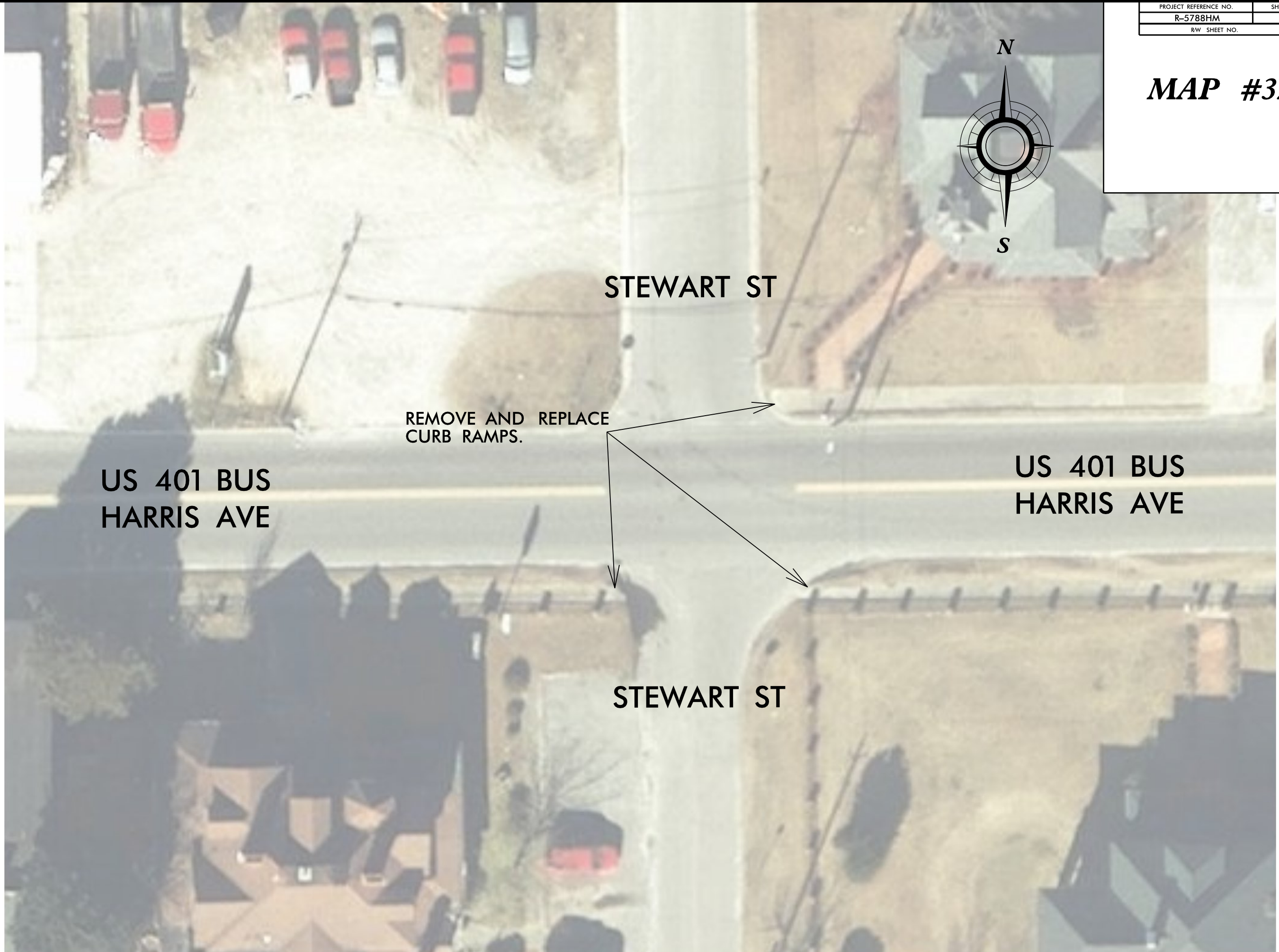
REVISIONS

25-OCT-2023 17:01  
Z:\cd\vinore\p\5788HM\HM\_ADA\_Cur-b\_Ramps\PI\p\5788HM\_maps121-125.dgn  
8/17/99



PROJECT REFERENCE NO.	SHEET NO.
R-5788HM	47
RW SHEET NO.	

**MAP #32**



**STEWART ST**

**REMOVE AND REPLACE  
CURB RAMPS.**

**US 401 BUS  
HARRIS AVE**

**US 401 BUS  
HARRIS AVE**

**STEWART ST**

REVISIONS

8/17/99

25-OCT-2023 17:03  
Z:\cd\vinore\R-5788HM-ADA-Curb-Plans\10-5788HM\_maps121-123.dgn



PROJECT REFERENCE NO.	SHEET NO.
R-5788HM	48
RW SHEET NO.	

**MAP #33**



SR 1405  
N MAIN ST

FIFTH AVE

REMOVE AND REPLACE  
CURB RAMPS.

FIFTH AVE

SR 1405  
N MAIN ST

REVISIONS

25-OCT-2023 17:05  
Z:\cd\vinore\R-5788HM-ADA-Curb-Plans\1R-5788HL-HM\_maps\121-125.dgn  
11/08/23 3:00PM



PROJECT REFERENCE NO.	SHEET NO.
R-5788HM	49
RW SHEET NO.	

**MAP #34**



SR 1405  
N MAIN ST

SIXTH AVE

REMOVE AND REPLACE  
CURB RAMPS.

SIXTH AVE

SR 1405  
N MAIN ST

REVISIONS

25-OCT-2023 17:07  
Z:\v\moore\p\5788HM\_HM\_ADA\_Curb-Ramps\p\5788HM\_maps121-125.dgn

8/17/99



PROJECT REFERENCE NO.	SHEET NO.
R-5788HM	50
RW SHEET NO.	

# MAP #35



SR 1405  
N MAIN ST

REMOVE AND REPLACE  
CURB RAMPS.

SEVENTH AVE

SEVENTH AVE

SR 1405  
N MAIN ST

REVISIONS

8/17/99

25-OCT-2023 17:09  
Z:\v-dy\moore\12-5788\12-5788\HM-ADA-Curb-Ramps\12-5788\12-5788\HM\_maps\121-125.dgn